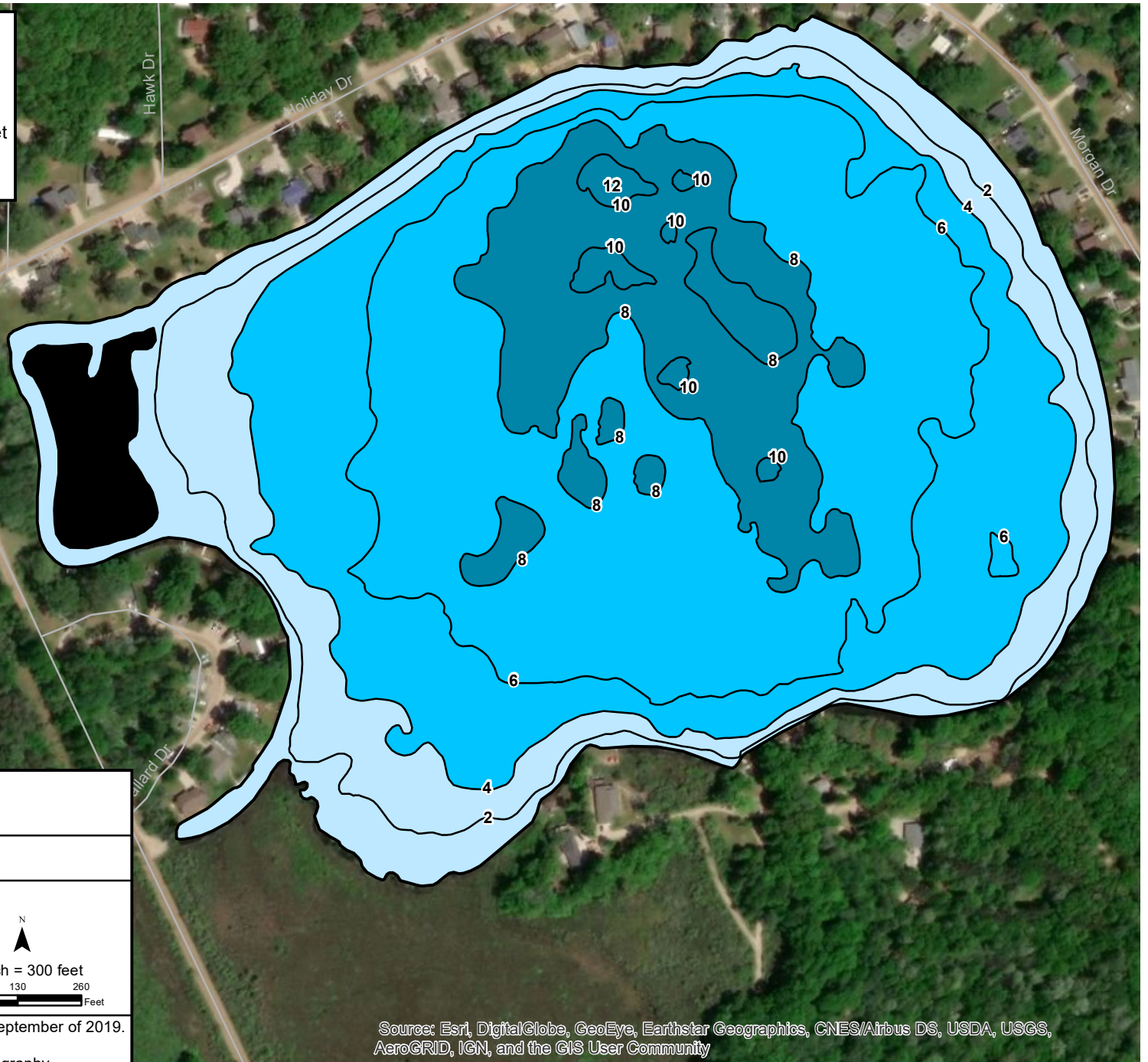


PHYSICAL CHARACTERISTICS

Lake Surface Area	56 Acres
Maximum Depth	12 Feet
Mean Depth	5.7 Feet
Lake Volume	312 Acre-Feet
Shoreline Length	1.7 Miles
Shoreline Development Factor	1.6

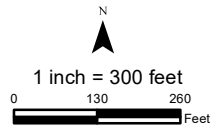


PERCH LAKE DEPTH CONTOUR MAP

MONTCALM COUNTY, MICHIGAN
T.10N, R.8W

LEGEND

- 5— Contours
- 0 - 4 Feet
- 4 - 8 Feet
- 8+ Feet



Note: Hydro-acoustic measurements conducted in September of 2019.
Hydro-acoustic data processed by Navico.
Lake shoreline digitized from aerial orthodigital photography
(Source: Vivid 2018)

Source: Esri, DigitalGlobe, GeoEye, Earthstar Geographics, CNES/Airbus DS, USDA, USGS, AeroGRID, IGN, and the GIS User Community

October 2019

progressive

1811 4 Mile Rd NE | Grand Rapids, MI 49525 | 616-361-2664 | www.progressiveae.com